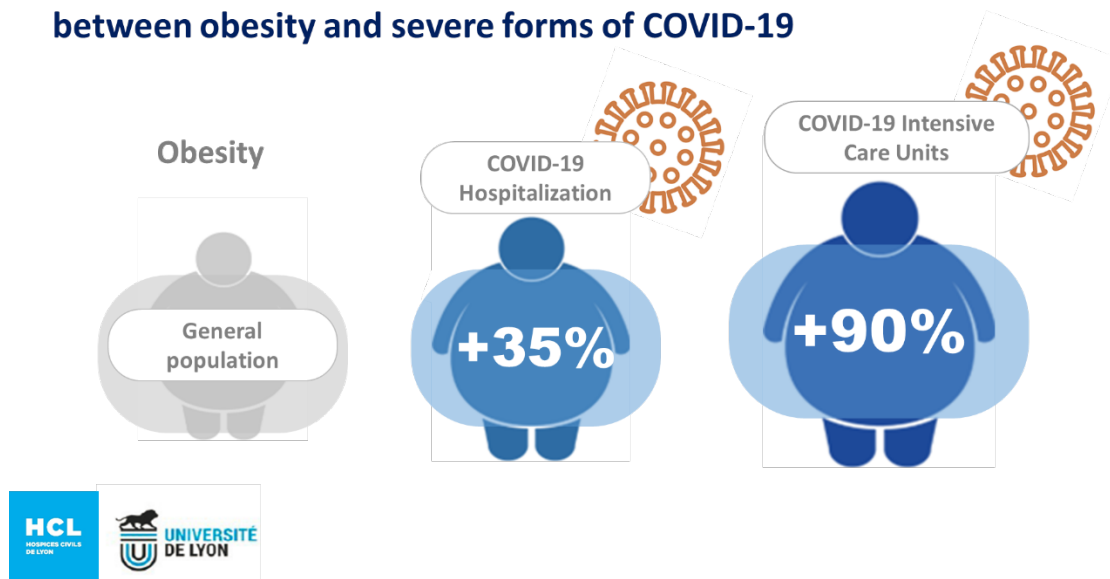


## New French study confirms important association between obesity and severe forms of COVID-19

Since the COVID-19 outbreak, the large number of patients admitted to hospital with obesity has concerned the medical profession. Given the current global obesity epidemic, it is crucial to scientifically evaluate whether patients with obesity suffer more severe forms of COVID-19.

Dr Cyrielle Caussy and Pr Emmanuel Disse from the Endocrinology, Diabetes and Nutrition Department and Integrated Center of Obesity in Lyon University Hospital (Hospices Civils de Lyon) conducted this French study.

### A French study confirms the important association between obesity and severe forms of COVID-19



Published in *The Lancet Diabetes and Endocrinology*, [http://www.thelancet.com/journals/landia/article/PIIS2213-8587\(20\)30160-1/fulltext](http://www.thelancet.com/journals/landia/article/PIIS2213-8587(20)30160-1/fulltext) \*, this study including 340 patients from the Lyon University Hospital, shows that patients with obesity and COVID-19 admitted in the hospital are significantly more important than expected (+35%). This is particularly important in intensive care units where patients with obesity are twice as numerous as usual as well as twice as numerous as in other medical departments with COVID-19 patients. These data in intensive care units confirmed those already published in another French population of 124 patient in ICU from Lille University Hospital, re-analyzed through a scientific collaboration with Pr François Pattou and Pr Merce Jourdain.

Patients with obesity could be more vulnerable to severe forms of COVID-19. This scientific demonstration should lead to reinforce preventive measures and prioritize access to care, vaccination and future treatments for this population.

*\*Correspondence pieces represent the views of the authors and not necessarily the views of The Lancet or any Lancet specialty journal. This Correspondence was peer-reviewed.*